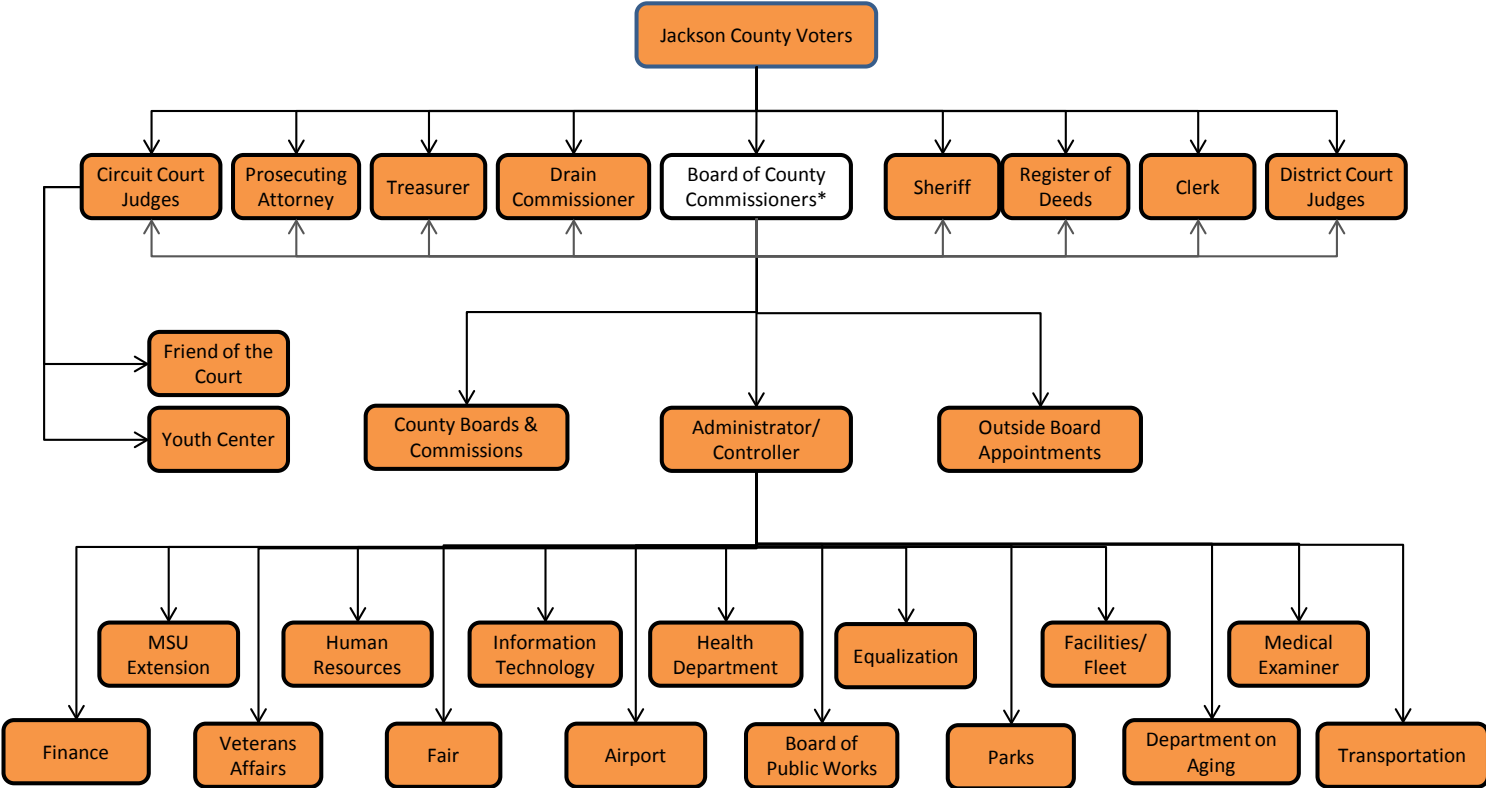


Jackson County, Michigan Organizational Chart



\* The Jackson County Board of Commissioners is the funding unit for all County agencies and departments including those headed by other elected officials.

## Organization/Staffing

The following table shows the budgeted positions expressed in terms of full time equivalent employees. Changes in personnel are explained in the department budget pages.

<i>Department</i>	<b>2011</b>	<b>2012</b>	<b>2013</b>	<b>2014</b>	<b>2015</b>	<b>2016</b>	<b>2017</b>
<i>Administrator/Controller</i>	2.50	2.50	2.50	2.50	2.50	2.50	2.50
<i>Aging</i>	27.74	27.74	27.74	27.74	27.74	27.74	27.74
<i>Airport</i>	3.50	3.50	3.50	3.50	3.50	3.50	3.50
<i>Circuit Court</i>	28.00	28.00	28.00	28.00	28.00	28.00	28.00
<i>Clerk</i>	19.30	18.90	18.90	18.90	18.90	18.90	18.90
<i>Commissioners</i>	12.00	12.00	9.00	9.00	9.00	9.00	9.00
<i>District Court</i>	49.00	49.00	49.00	49.00	49.00	49.00	49.00
<i>Drain</i>	2.00	2.00	2.00	2.00	2.00	2.00	2.00
<i>Equalization</i>	7.00	7.00	7.00	7.00	7.00	7.00	7.00
<i>Facilities</i>	14.75	14.75	14.75	15.75	15.75	15.75	15.75
<i>Fair</i>	1.00	1.00	1.00	1.34	1.34	1.34	1.34
<i>Finance</i>	3.60	3.60	3.50	3.50	3.50	3.50	3.50
<i>Friend of the Court</i>	44.00	44.00	44.00	44.00	44.00	44.00	44.00
<i>GIS</i>	2.00	2.00	2.00	2.00	2.00	2.00	2.00
<i>Guardian</i>							
<i>Health</i>	52.98	54.98	56.12	56.62	57.62	57.62	57.62
<i>Human Resources</i>	2.90	3.15	5.75	5.75	5.75	5.75	5.75
<i>Information Technology</i>	9.00	9.00	9.00	9.00	11.00	11.00	11.00
<i>Medical Examiner</i>	2.00	2.00	2.00	2.00	2.00	2.00	2.00
<i>MSU Extension</i>	2.50	2.00	1.00	1.00	1.00	1.00	1.00
<i>Parks</i>	8.75	8.75	8.75	8.41	8.41	8.41	8.41
<i>Prosecuting Attorney</i>	25.60	25.60	25.60	25.60	25.60	25.60	25.60
<i>Register of Deeds</i>	5.00	5.00	5.00	5.00	5.00	5.00	5.00
<i>Retirement</i>	1.30	1.30					
<i>Sheriff</i>	131.00	134.00	134.00	131.00	134.00	131.00	131.00
<i>Treasurer</i>	7.00	7.00	7.00	7.00	7.00	7.00	7.00
<i>Veterans Affairs</i>	2.00	2.00	2.00	2.00	2.00	2.00	2.00
<i>Youth Center</i>	32.35	32.35	32.35	32.35	32.35	32.35	32.35
<i>Eliminated Programs</i>							
<i>Transportation</i>				75.00	75.00	75.00	75.00
<b>Total</b>	<b>498.77</b>	<b>503.12</b>	<b>501.46</b>	<b>574.96</b>	<b>580.96</b>	<b>577.96</b>	<b>577.96</b>