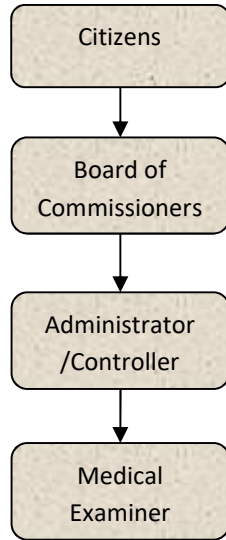


Medical Examiner



Activities

It is the duty of this office to investigate in certain instances the cause and manner of death within the county due to acts of violence, negligence or omission of a criminal nature and/or threats to protect public health.

The services of pathology assistants, forensic pathologists, forensic dentists, body removal services, field investigators, histology, etc., either are contracted or are on a fee for service basis.

All service providers work on an on-call basis and respond when needed, coordinating their efforts to be most effective.



Mission Statement

It is the mission of this office to complete an efficient, professional and dignified investigation of any death reported to this office, which falls under the guidelines set forth by the State of Michigan and having occurred within the County of Jackson in order to determine cause and manner of death.

Programs

It is the duty of this office to investigate in certain instances the cause and manner of death within this county due to acts of violence, negligence or omission of a criminal nature and/or threats to protect public health.

Strategic Plan Impact

✓ **Safe Community**

This is a State mandated office, which has a direct impact on the safety of the community as we are responsible for investigating sudden & unexpected deaths. For example, the information gathered provides direct support for prosecution in criminal matters, or can be provided to families when the potential for a genetic problem is identified, therefore possibly saving lives in the future. Our office by and through our investigations prevents repeat injuries and works to identify any potential threat to the public health.

✓ **Healthy Community**

We help to provide critical and time sensitive information regarding the deaths in the community to protect the health and welfare of our citizens as well as establishing trends to be addressed to promote a healthier community.

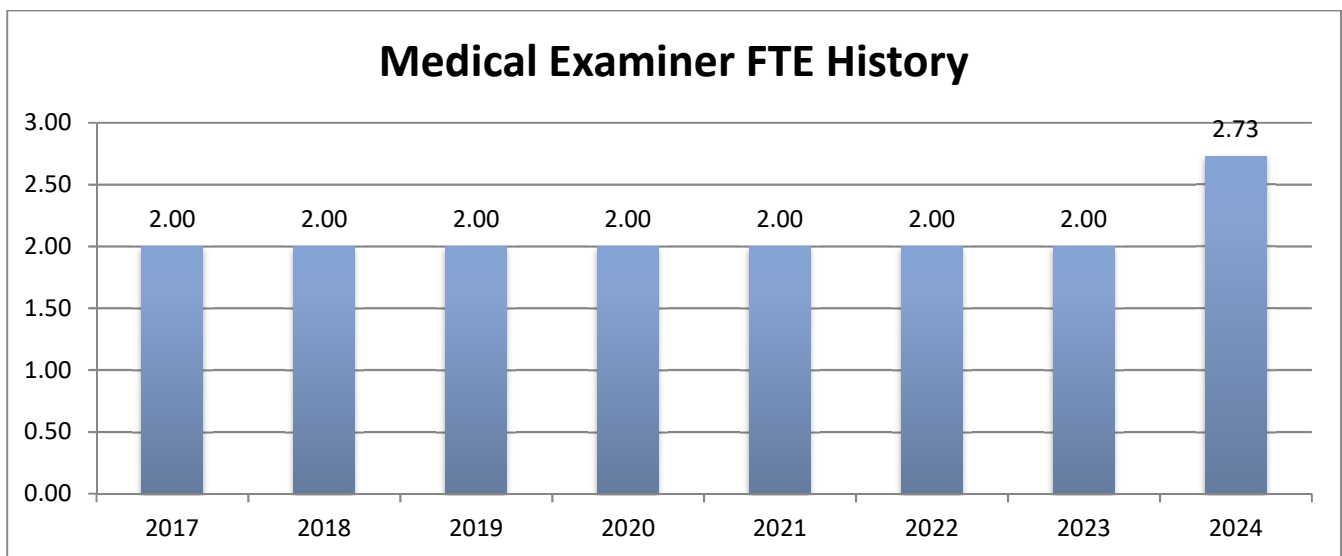
Accomplishments

- ✓ In March of 2019, the County of Jackson opened its own morgue facility. This endeavor was taken on following the closing of the autopsy suite at Henry Ford Allegiance Health. Effective July 2020, the Lenawee-Hillsdale Medical Examiner Joined in an agreement with Jackson County to share the morgue space. Jackson, Lenawee and Hillsdale Counties perform autopsies at the Jackson County facility. Even though case numbers have been high throughout the pandemic, the staff of the Jackson County Medical Examiner's Office remain dedicated to serve the people of these counties.

Medical Examiner

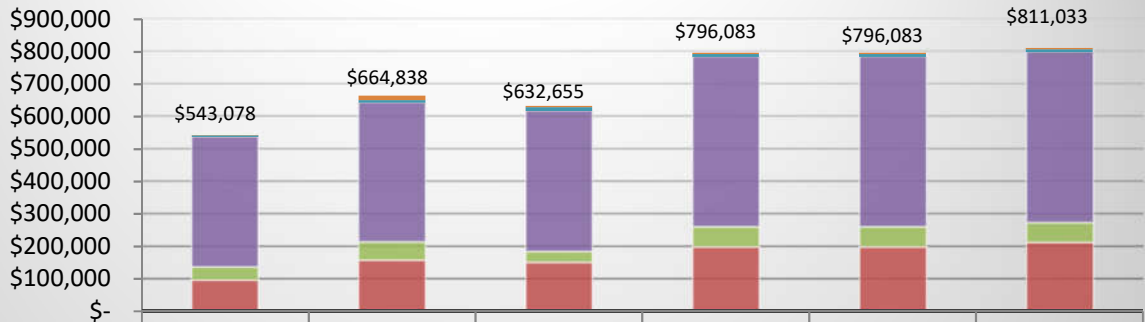
Budget Adjustments

The administrative office position that was set up as part-time during the 2020 staffing adjustments was changed to a full-time position during April of 2021. Office staff quickly realized that due to the high volume of work more staff hours were required. Lenawee County's rent was adjusted to reflect this change. During 2020 and 2021, all three counties experienced a record caseload. During 2022, Jackson County case numbers were slightly lower than 2021.



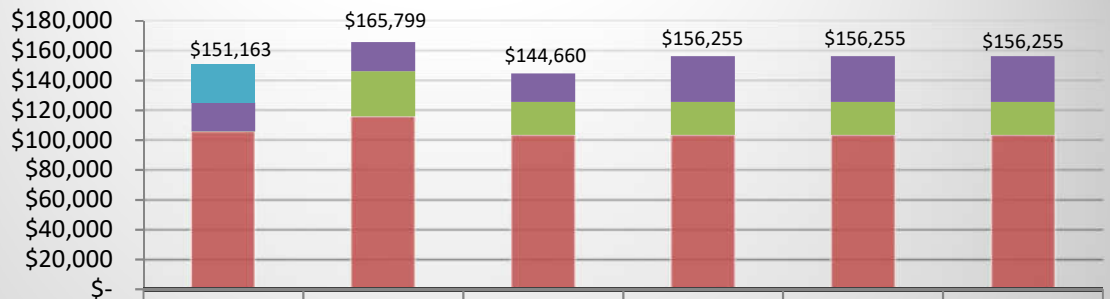
Medical Examiner

Medical Examiner Expenditures



	2021 ACTUAL	2022 ACTUAL	2023 AMENDED BUDGET	2024 DEPT REQUESTED	2024 BUDGET	Draft 2025 BUDGET
CAPITAL OUTLAY	\$914	\$14,748	\$3,500	\$3,500	\$3,500	\$3,500
OTHER EXPENSES	\$5,459	\$7,193	\$11,977	\$8,600	\$8,600	\$8,600
CONTRACT SERVICES	\$400,520	\$429,772	\$433,000	\$524,000	\$524,000	\$526,000
SUPPLIES & MATERIALS	\$40,471	\$56,310	\$33,958	\$62,050	\$62,050	\$61,850
PERSONNEL SERVICES	\$95,714	\$156,815	\$150,220	\$197,933	\$197,933	\$211,083
TOTAL PROGRAM COSTS	\$543,078	\$664,838	\$632,655	\$796,083	\$796,083	\$811,033

Medical Examiner Revenues



	2021 ACTUAL	2022 ACTUAL	2023 AMENDED BUDGET	2024 DEPT REQUESTED	2024 BUDGET	Draft 2025 BUDGET
INTERGOVERNMENTAL	\$26,090	\$-	\$-	\$-	\$-	\$-
INTEREST & RENTALS	\$19,159	\$19,618	\$19,160	\$30,755	\$30,755	\$30,755
OTHER REVENUE	\$14	\$30,322	\$22,000	\$22,000	\$22,000	\$22,000
CHARGES/FEES	\$105,900	\$115,859	\$103,500	\$103,500	\$103,500	\$103,500
TOTAL PROGRAM REVENUE	\$151,163	\$165,799	\$144,660	\$156,255	\$156,255	\$156,255



This page intentionally left blank.