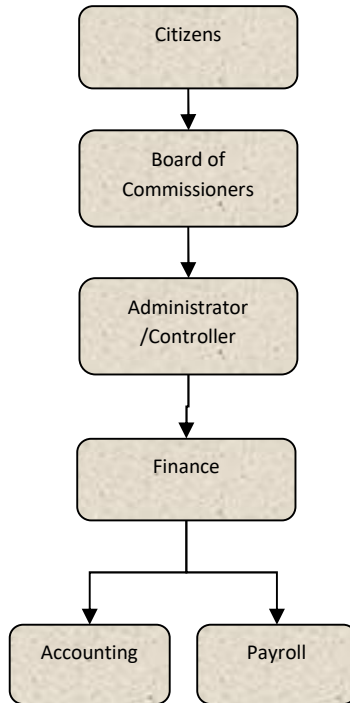


Finance Department



Activities

Process journal entries, accounts receivable and invoicing customers

Maintain County general ledger accounting system

Liaison between County and outside fiscal agencies

Monitor internal controls to ensure accuracy of financial records and ensure policies are followed

Provide accounting support to all County departments



Mission Statement

In cooperation with other departments and agencies, to properly account for the transactions of the County, ensure that policies are followed; assist other departments in a planned and proactive manner. To provide timely month-end and year-end closing for internal & external users of county financials.

To promote, facilitate, and enhance safe, healthy, and positive working conditions, amicable resolution of differences, a consistent, cooperative and inoffensive work environment and hiring and promotion opportunities for all County employees. To provide timely, responsible, cost effective services, and information to our customers.

Strategic Plan Impact

✓ **Internal Service Agency**

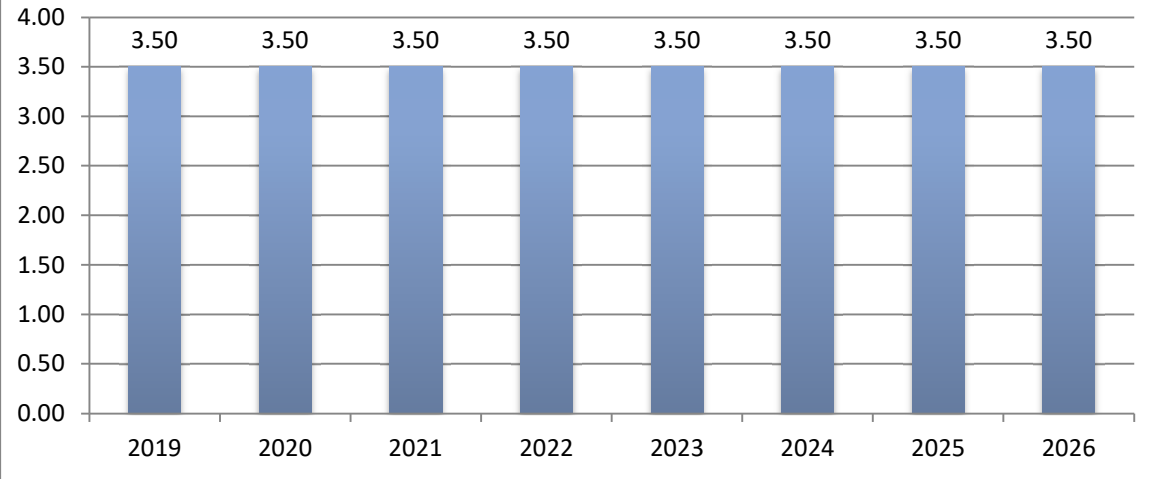
The Finance Department is an internal service agency. The functions of this department are essential to the delivery of strategic services. The Finance Department provides accounting and human resource support to other county departments. They process vendor payments and bi-weekly payroll, maintain the general ledger system, manage employee benefit programs, and among a host of other duties and responsibilities. These functions provide the information and statistics that county leadership uses to make decisions and allocate resources to accomplish the strategic plan.

Budget Adjustments

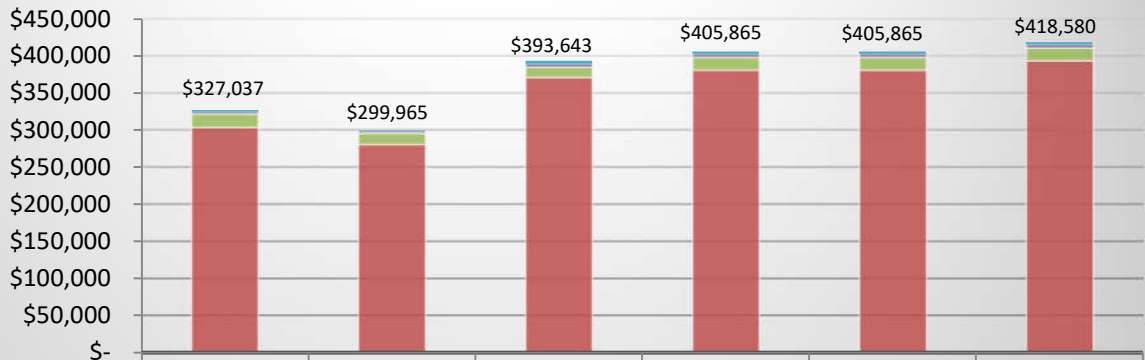
There are no major budget adjustments for 2026-2027.

Finance Department

Finance Department FTE History



Finance Department Expenditures



	2023 ACTUAL	2024 ACTUAL	2025 AMENDED BUDGET	2026 DEPT REQUESTED	2026 BUDGET	2027 DRAFT BUDGET
OTHER	\$2,125	\$1,030	\$4,125	\$3,100	\$3,100	\$3,100
CONTRACT SERVICES	\$3,350	\$3,352	\$5,000	\$5,000	\$5,000	\$5,000
SUPPLIES & MATERIALS	\$18,348	\$15,413	\$14,110	\$17,310	\$17,310	\$17,310
PERSONNEL SERVICES	\$303,214	\$280,170	\$370,408	\$380,455	\$380,455	\$393,170
TOTAL PROGRAM COSTS	\$327,037	\$299,965	\$393,643	\$405,865	\$405,865	\$418,580



This page intentionally left blank.