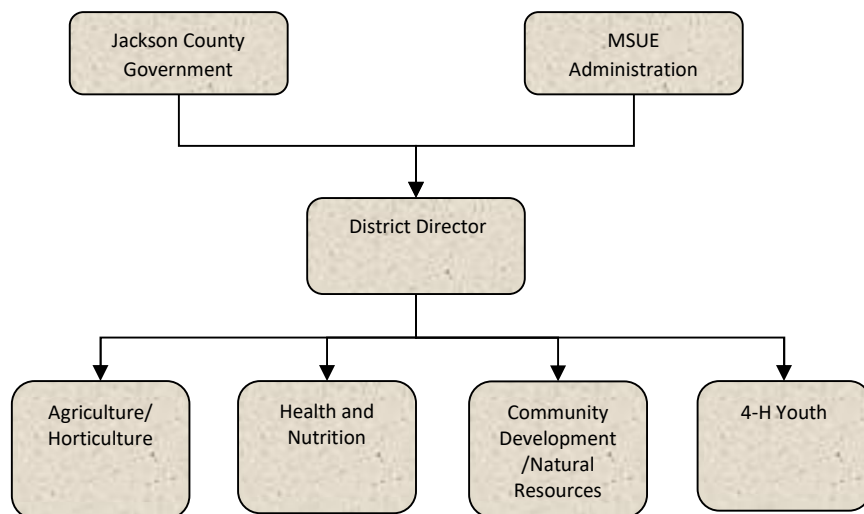


Activities

MSU Extension



Provide educational programming in agriculture and natural resources, land use, watershed and pesticide management and farm financial stability. Provide educational materials through direct program delivery, distance technology, and the website.

Provide educational programming to horse and small ruminant producers (including principal enterprise and youth) throughout the state in regard to livestock production management and nutrition.

Extension 4-H Youth Program - works with youth ages 5-19 and adult volunteers in skill training in character development, leadership, self-esteem and healthy life style choices.

Provide Jackson County residents with educational programs on care and maintenance of their land.

Provide educational programs and information through use of media, one-on-one contact, and educational classroom setting.

Provide educational leadership to create an economical and sociological sustainable agriculture to retain farmers, farmland, open space and the resulting quality of life, rural America work ethic, and a moral sociological influence.



Mission Statement

Jackson County MSU Extension is an educational leader working with local citizens, government and community organizations, which is based on university research and involves learners in setting goals and applying knowledge for a better life.

Strategic Plan Impact

- ✓ **Safe Community**
MSU Extension supports the safe community strategic goal helping to create self-sustaining people. MSU Extension works with county residents to provide needed life skills to have youth involved in productive activities with volunteer mentors.
- ✓ **Economic Development**
MSUE provides educational programs to increase business skills in development, sustainability and future opportunities to ensure continued growth and vibrancy.
- ✓ **Healthy Community**
MSUE provides information and technical assistance in how to achieve a healthy lifestyle in the areas of food and nutrition, growth and development and resource management.
- ✓ **Recreational & Cultural Opportunities**
MSUE provides recreational and cultural activities to the citizens of Jackson County through programs that encourage use of our natural resources, wholesome family activities and opportunities to engage in cultural and educational events.

Accomplishments

- ✓ **Safe Community:** Community service projects are part of nearly every 4-H experience. 4-H'ers all over Michigan are identifying needs in their communities, figuring out how to address those needs and stepping up to solve problems, make improvements and create change.
- ✓ **Safe Community:** MSU Extension educators and specialists conducted an Emergency Response to Accidents Involving Livestock (ERAIL) training for first responders who may be called to the scene of an accident involving livestock. This training gave first responders hands-on experiences for dealing with livestock related incidents in their line of work.

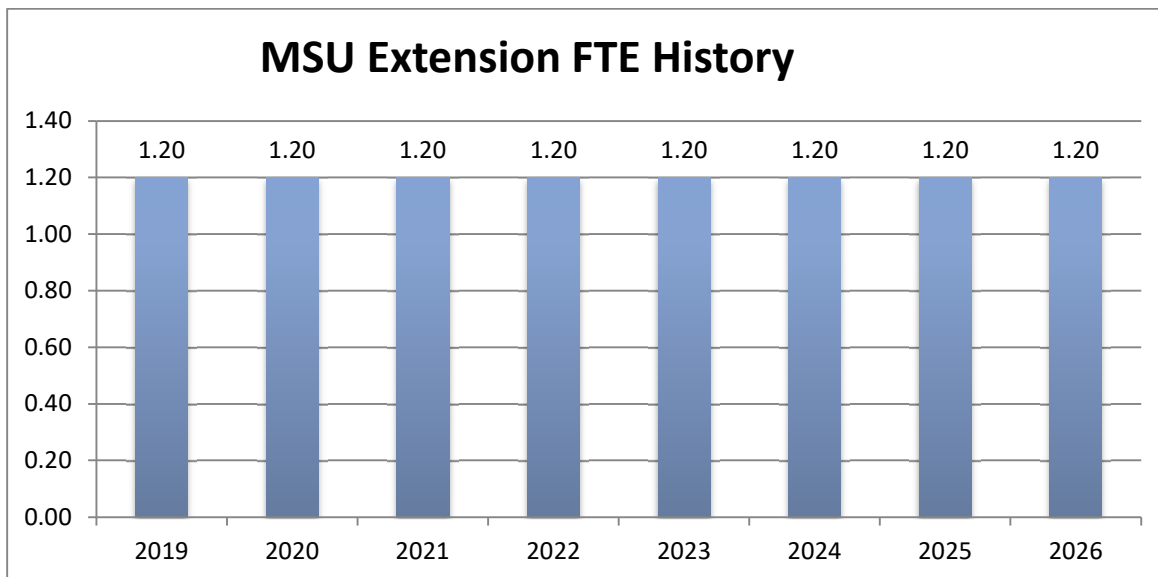
MSU Extension

- ✓ **Safe Community:** MSU Extension has developed a workshop specially designed for people who work with agricultural producers and farm families who want to know more about managing farm-related stress and learn ways to approach and communicate with those in need. Farmers and farm families are also encouraged to attend.
- ✓ **Recreational & Cultural Opportunities:** Jackson County Farm Bureau, with help from the Jackson County Fair, MSU Extension, Jackson County Ag Council, FSA & Soil Conservation, sponsors Rural Education Day (Project RED) at the Jackson County Fair Grounds. Many volunteers and local farmers get together for one day to educate 3rd graders from elementary schools across the county about food and fiber.
- ✓ **Economic Development:** The Master Gardener Volunteer program (MGVP) gives interested individuals the chance to participate in a training experience that provides in-depth education in many aspects of horticulture, including trees and shrubs, flowers, vegetables, fruit, soil, water, pests, indoor gardens, and lawns. We are interested in bringing the Master Gardener Program back to Jackson County if we can find funding.
- ✓ **Economic Development:** The MSU Product Center is available to assist county residents in developing products and businesses in the areas of food, agriculture, natural resources and the bio economy. MSUE has educators with special training as innovation counselors to deliver these services to Jackson County. The partnership between MSUE and the MSU Product Center is providing support for entrepreneurs, which supports economic development across the state.
- ✓ **Healthy Community:** MSU teaches the ServSafe® program to improve food safety procedures at food establishments by training managers and employees. The learning of those who attend ServSafe® training is evaluated by whether they are able to pass the state mandated written test at the conclusion of the class. As of April 1, 2010, Michigan food service establishments are required to employ a minimum of one certified manager. Across Michigan there is a need for educational programming to assist with training food service managers and past attendees are required to renew their certification every 5 years.
- ✓ **Healthy Community:** The Supplemental Nutrition Assistance Program—Education (SNAP-Ed) provides nutrition education low income adults and children. This program focuses on improving dietary quality, and on increasing physical activity, while stretching food dollars. The ultimate goal of SNAP-Ed programs is to promote healthy weight maintenance and to prevent obesity. Nutrition education programs offered in Jackson County include Cooking Matters for Adults, Eat Healthy Be Active, WIC Project Fresh, and Show Me Nutrition.
- ✓ **Healthy Community:** The Expanded Food and Nutrition Education Program (EFNEP) is designed to help children and families acquire the knowledge, skills, attitudes and changed behavior necessary for nutritionally sound diets. Michigan State University Extension delivers

MSU Extension

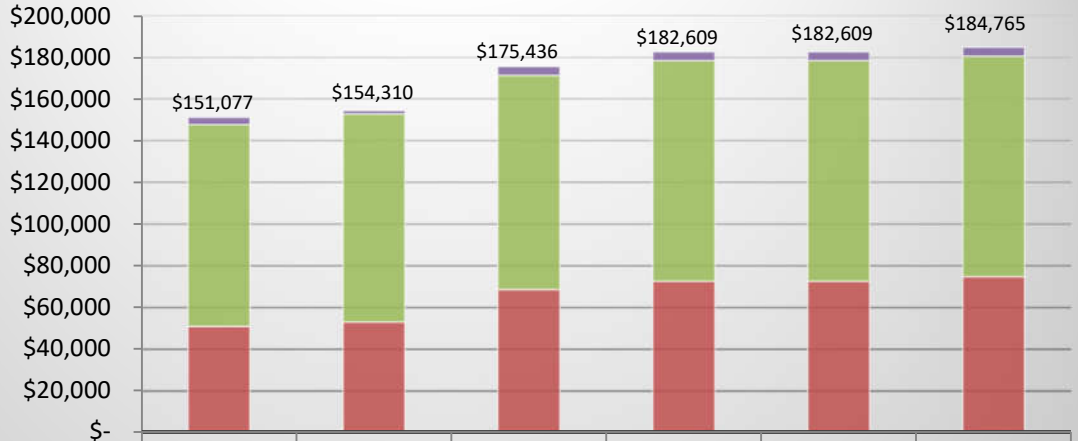
- ✓ EFNEP in a group setting environment. EFNEP is for limited-resource adults who are responsible for planning, shopping and preparing food for children in their household, individuals and families who are expecting a child or adults who care for children on a regular basis, such as grandparents.
- ✓ **Healthy Community: Good Agricultural Practices**— Classes and presentations on Good Agricultural Practices prepare farmers to sell their produce in retail markets and ensure the safety of their produce for sale. In these programs, participants learn about topics in produce safety, responsibility in food safety, good agricultural practices and how to implement changes in their operation that can further enhance quality and safety of their food.

Budget Adjustments There are no significant changes to the county contribution to MSU Extension. MSU Extension has reformed their organizational structure at the state level, which changes the approach to county funding. In 2012 Jackson County entered into a memorandum of agreement with MSU Extension. A base funding has been established for Jackson County based on county population.



MSU Extension

MSU Extension Expenditures



	2023 ACTUAL	2024 ACTUAL	2025 AMENDED BUDGET	2026 DEPT REQUESTED	2026 BUDGET	Draft 2027 BUDGET
OTHER EXPENSES	\$3,402	\$1,554	\$4,185	\$4,185	\$4,185	\$4,185
CONTRACT SERVICES	\$96,789	\$99,692	\$102,683	\$105,765	\$105,765	\$105,765
PERSONNEL SERVICES	\$50,886	\$53,064	\$68,568	\$72,659	\$72,659	\$74,815
TOTAL PROGRAM COSTS	\$151,077	\$154,310	\$175,436	\$182,609	\$182,609	\$184,765

MSU Extension

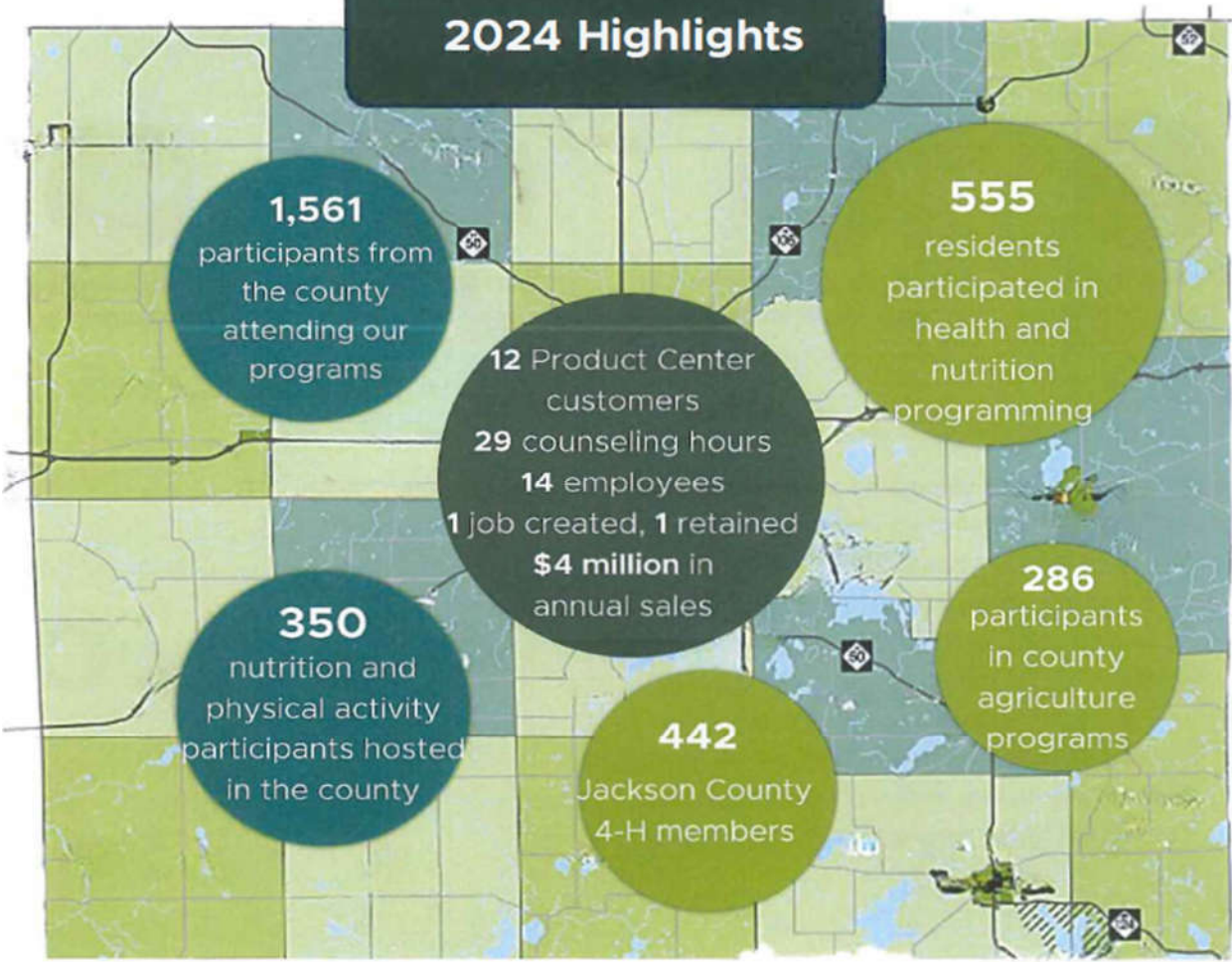
Strategic Outcomes

Indicator	2020 Actual	2021 Actual	2022 Actual	2023 Actual	2024 Actual	2025 Target
Number of individuals using soil tests to guide fertilizer applications	175	165	109	69	96	95
Money saved from volunteering	\$90,000	\$43,605	\$86,106	\$140,921	\$108,038	\$100,200

Other Key Indicators

Indicator	2020 Actual	2021 Actual	2022 Actual	2023 Actual	2024 Actual	2025 Target
Youth 5-19 year olds involved in programming	3,000	1,445	1,308	1,011	775	1000
Educators	4	4	3	5	6	6
Secretaries	1.2	1.2	1.2	1.2	1.2	1.2
Program Coordinators/Instructors	6	6	6	6	5.5	6.5
4-H volunteers	200	102	115	125	163	150
Number of youth reached per volunteer	15	15	26.5	8	4.75	6.7
ServSafe pass rates	91%	90%	90%	90%	90%	90%

2024 Highlights





This page intentionally left blank.