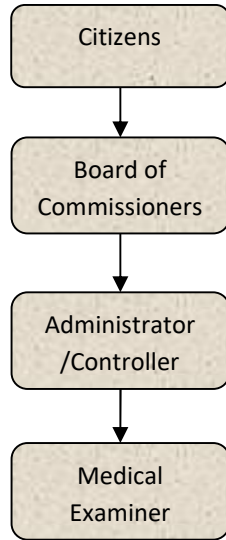


Medical Examiner



Activities

It is the duty of this office to investigate in certain instances the cause and manner of death within the county due to acts of violence, negligence or omission of a criminal nature and/or threats to protect public health.

The services of pathology assistants, forensic pathologists, forensic dentists, body removal services, field investigators, histology, etc., are either contracted or are on a fee for service basis.

All service providers work on an on-call basis and respond when needed, coordinating their efforts to be most effective.



Mission Statement

It is the mission of this office to complete an efficient, professional and dignified investigation of any death reported to this office, which falls under the guidelines set forth by the State of Michigan and having occurred within the County of Jackson, in order to determine cause and manner of death.

Programs

It is the duty of this office to investigate in certain instances the cause and manner of death within this county due to acts of violence, negligence, or death that is unexpected or a threat to public health.

Strategic Plan Impact

✓ **Safe Community**

This is a State mandated office, which has a direct impact on the safety of the community as we are responsible for investigating sudden & unexpected deaths. For example, the information gathered provides direct support for prosecution in criminal matters, or can be provided to families when the potential for a genetic problem is identified, therefore possibly saving lives in the future. Our office by and through our investigations prevents repeat injuries and works to identify any potential threat to the public health.

✓ **Healthy Community**

We help to provide critical and time sensitive information regarding the deaths in the community to protect the health and welfare of our citizens as well as establishing trends to be addressed to promote a healthier community.

Accomplishments

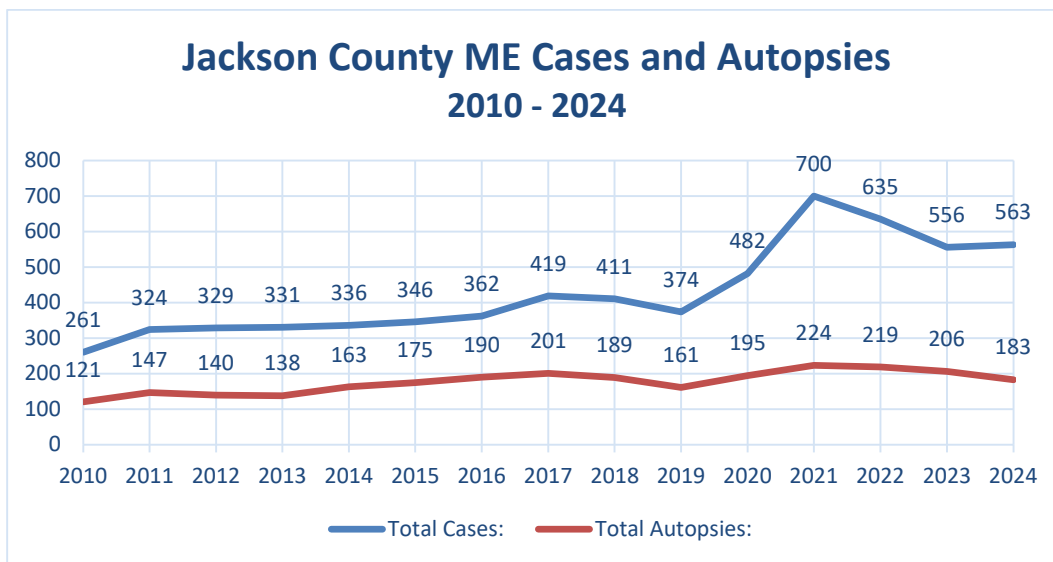
- ✓ During 2024, we investigated 1,019 Cases for Jackson, Lenawee and Hillsdale Counties, while performing 329 autopsies. Over half of the investigated cases were from Jackson County. There has been an increase in complicated casework, which requires additional time and effort, including signing many death certificates of non-medical examiner cases (non-autopsy cases).
- ✓ Part-time staff have successfully scanned in almost 30 years of old case files.
- ✓ Two Full-time staff members completed Jackson's LIFT Training.
- ✓ In Spring of 2024, we hosted our 1st Medical Examiner Training focusing on Death Scene Investigation. We were able to include several local law enforcement officers as well. Plans are already in place for 2025 Staff Training in the fall.

Medical Examiner

- ✓ Office management completed presentations on “Reporting to the Medical Examiner” to local Hospice providers.
- ✓ Starting during the fall school year, the Medical Examiner’s Office has taken part in many career fairs and career presentations highlighting medicine, science, and forensic science.
- ✓ Office staff coordinate and/or take part in two review teams, one regarding child death and the other regarding drug fatalities.
- ✓ One computer workstation was updated during 2024. Instead of a desktop, we decided to go to a laptop with docking station so that staff can work from anywhere.
- ✓ We started the process of working with Lomar, a local company, to have them fabricate 2 new autopsy carts to help with storage issues. The carts were delivered in 2025.
- ✓ Full-time staff continue to seek opportunities for education and collaboration including taking part in a Medical Examiner Admin Group, attending a Mass Fatality Training hosted by Oakland County Medical Examiner’s Office, etc. Plans are in the works for a Mass Fatality Committee within our own office.

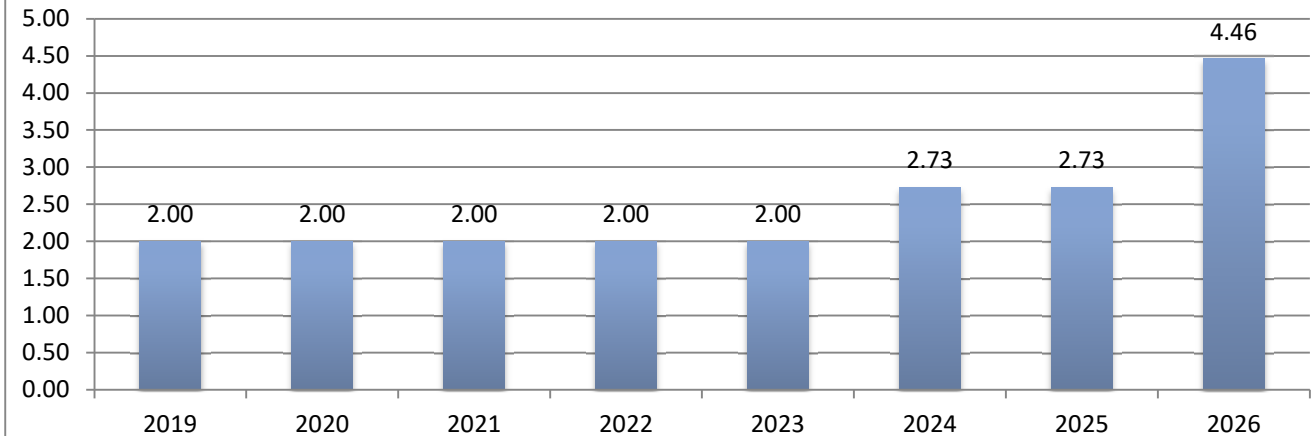
Budget Adjustments

The Office of the Medical Examiner continues to provide excellent service even with an increased, difficult caseload. We will be working on a resolution to help alleviate current staff with the stressful load. This resolution includes adding a casual employee and developing a new position for Lead Investigator.

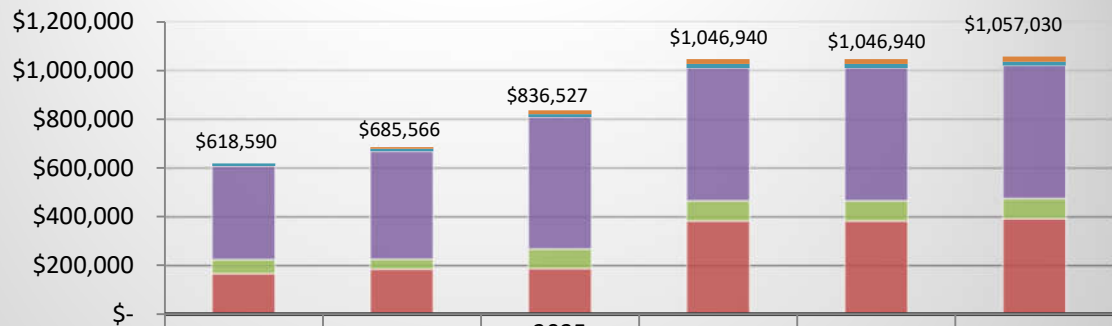


Medical Examiner

Medical Examiner FTE History



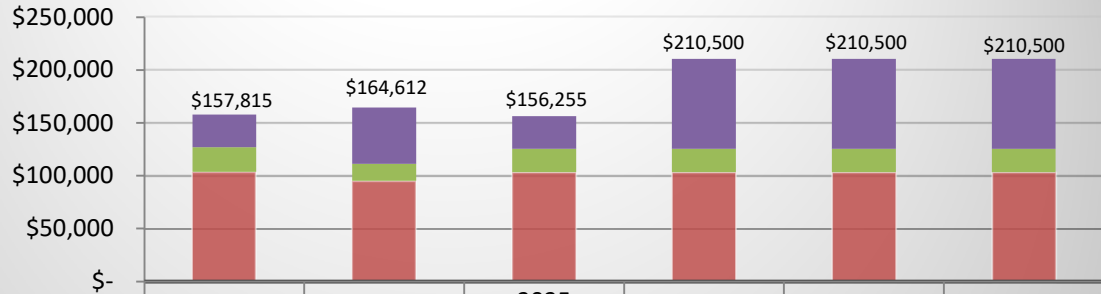
Medical Examiner Expenditures



	2023 ACTUAL	2024 ACTUAL	2025 AMENDED BUDGET	2026 DEPT REQUESTED	2026 BUDGET	Draft 2027 BUDGET
CAPITAL OUTLAY	\$-	\$6,526	\$15,000	\$20,000	\$20,000	\$20,000
OTHER EXPENSES	\$10,264	\$11,205	\$12,800	\$16,600	\$16,600	\$16,600
CONTRACT SERVICES	\$383,144	\$441,013	\$540,000	\$545,000	\$545,000	\$545,000
SUPPLIES & MATERIALS	\$57,519	\$41,643	\$80,550	\$83,050	\$83,050	\$83,050
PERSONNEL SERVICES	\$167,663	\$185,179	\$188,177	\$382,290	\$382,290	\$392,380
TOTAL PROGRAM COSTS	\$618,590	\$685,566	\$836,527	\$1,046,940	\$1,046,940	\$1,057,030

Medical Examiner

Medical Examiner Revenues



	2023 ACTUAL	2024 ACTUAL	2025 AMENDED BUDGET	2026 DEPT REQUESTED	2026 BUDGET	Draft 2027 BUDGET
INTEREST & RENTALS	\$30,757	\$53,335	\$30,755	\$85,000	\$85,000	\$85,000
OTHER REVENUE	\$23,283	\$16,177	\$22,000	\$22,000	\$22,000	\$22,000
CHARGES/FEES	\$103,775	\$95,100	\$103,500	\$103,500	\$103,500	\$103,500
TOTAL PROGRAM REVENUE	\$157,815	\$164,612	\$156,255	\$210,500	\$210,500	\$210,500



This page intentionally left blank.