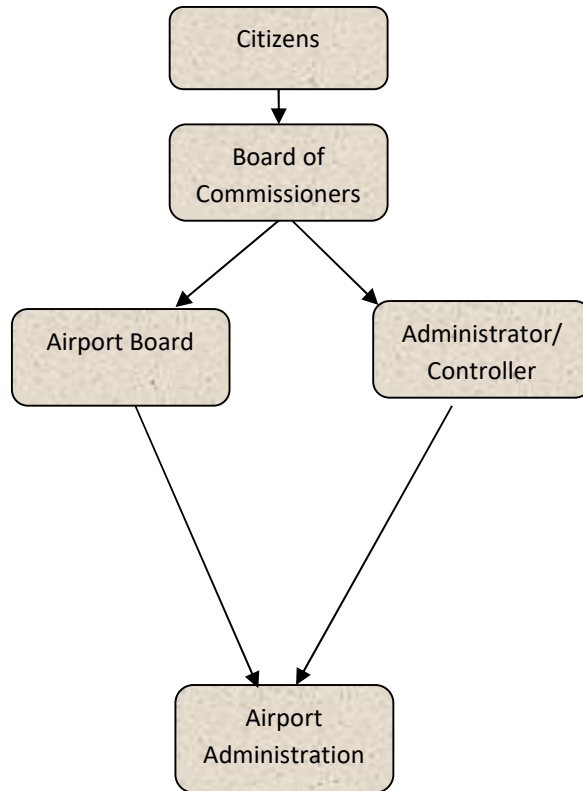


Airport



Activities

Maintain, develop, and operate the Regional Airport consisting of 950 acres with two runways, associated taxiways, nine buildings including the control tower, the airport terminal, and three historical buildings.

Coordination of community special events, tours, and education programs.

Property management responsibilities: Executing rental and lease agreements for airport-based hangar tenants, hangar owners, and businesses.

Administration of Jackson County Airport Zoning Ordinance.

Liaison with FAA on air traffic control funding and compliance issues.

Coordination with MDOT Office of Aeronautics for Federal Airport Improvement Program (AIP) funding and airport licensing.

Mission Statement

Providing an exceptional airport and supporting infrastructure for pilots and community partners now and into the future.

Motto

“Flying Jackson Forward”



Vision Statement

The vision of Jackson County Airport - Reynolds Field is to remain a full service airport that encourages people to travel and conduct business here.

Values Statements

Quality – We do great work getting it right the first time and continue to seek new methods to improve our services.

Integrity – We are open and honest with each other and our customers keeping high integrity at the forefront of all that we do.

Community – We strive to improve our community during and after work.

Teamwork – We collaborate with coworkers, partners and customers to accomplish the airport mission.

Efficiency – We work to enhance the value of each resource dollar expended to maximize benefit and minimize waste.

Accountability – We hold ourselves accountable for our actions and for the resources entrusted to us.

Programs

Airport Operation, Development, and Administration

Talent & Economic Development

Airport Zoning Administration

Community Outreach

Strategic Plan Impact

✓ **Economic Development**

✓ The County's strategic planning initiative ranks the airport as the number one County General Fund Agency in the Economic Development category and Economic Development remains the top strategic priority. A successful airport impacts economic development in the County and the region. A full-service airport, capable of accommodating small to medium business and regional jets, and having all-weather access capability, is a necessary catalyst for economic stability and future growth. The Airport creates local private enterprise jobs in the following business types: aviation repair, corporate flight departments, flight instruction; restaurant, car rental, fuel sales, investment brokerage, aircraft repair, medical, heating and cooling, clock design and repair, and petroleum property brokerage.

✓ **Healthy Community**

The airport is routinely used for medical patient and organ donation transportation as well as housing a local ambulance service.

✓ **Recreational & Cultural Opportunities**

The airport is the site for a number of special annual events, including ~~the Jackson County Conservation District Tree Sale~~, Aviation Day, Michigan Speedway NASCAR race, and the EAA pancake breakfast. The airport is home to many recreational pilots also. Aviation Heritage Park now boasts a dozen aviation themed displays for the public to view and has become a destination for aviation enthusiasts and tour groups. The EAA maintains a large display of WWII artifacts and memorabilia which it routinely shares with Airport tour groups.

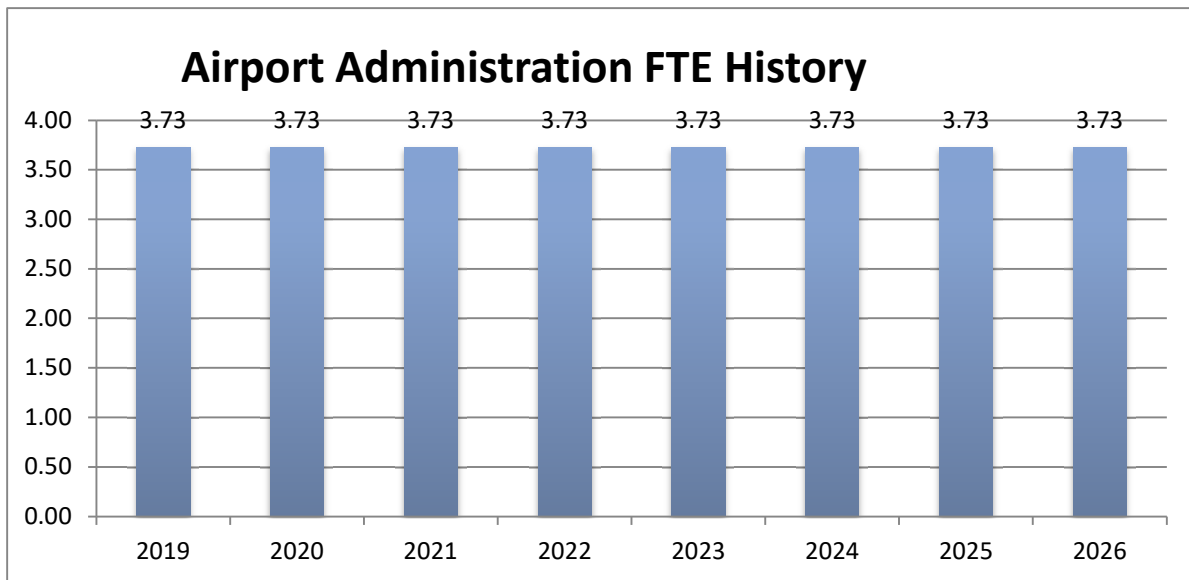
Airport

Accomplishments

- ✓ Easement acquisition that will provide safe aircraft operating distances from obstructions when aircraft are taking off or landing.
- ✓ Updates to control tower building and terminal building.
- ✓ Community Outreach Programs for Aviation Career Development.
- ✓ Continued safe aircraft operations with over 35,000 takeoffs and landings.

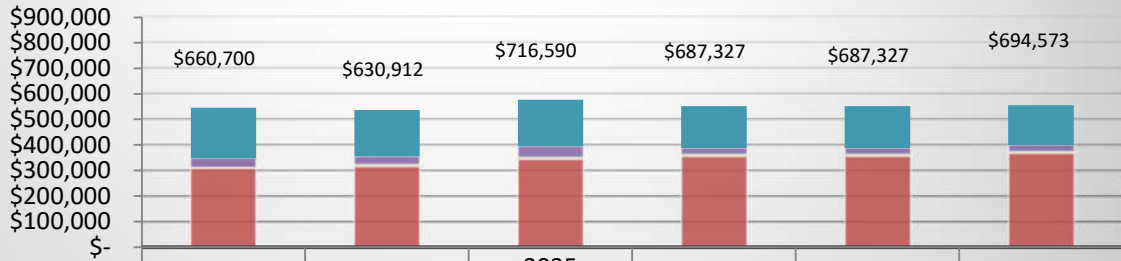
Budget Adjustments

Funding for seasonal help was received in 2024 and expected to be needed in 2025. This seasonal position assists in mowing grass, snow plowing and light maintenance. Aging infrastructure and equipment will require funding increases for building maintenance, road repair, and equipment replacement.



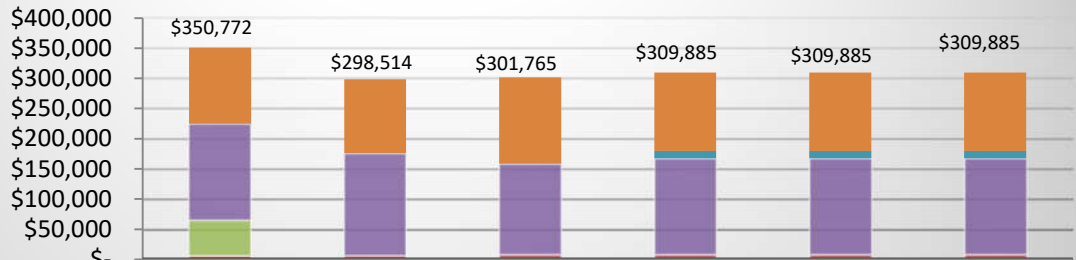
Airport

Airport Administration Expenditures



	2023 ACTUAL	2024 ACTUAL	2025 AMENDED BUDGET	2026 DEPT REQUESTED	2026 BUDGET	2027 DRAFT BUDGET
OTHER EXPENSES	\$197,227	\$181,843	\$181,773	\$164,714	\$164,714	\$157,316
CONTRACT SERVICES	\$38,789	\$32,717	\$44,800	\$25,600	\$25,600	\$25,600
SUPPLIES & MATERIALS	\$1,268	\$6,627	\$7,060	\$7,060	\$7,060	\$7,060
PERSONNEL SERVICES	\$308,343	\$315,737	\$343,445	\$354,977	\$354,977	\$366,215
TRANSFER OUT	\$115,073	\$93,988	\$139,512	\$134,976	\$134,976	\$138,382
TOTAL PROGRAM COSTS	\$660,700	\$630,912	\$716,590	\$687,327	\$687,327	\$694,573

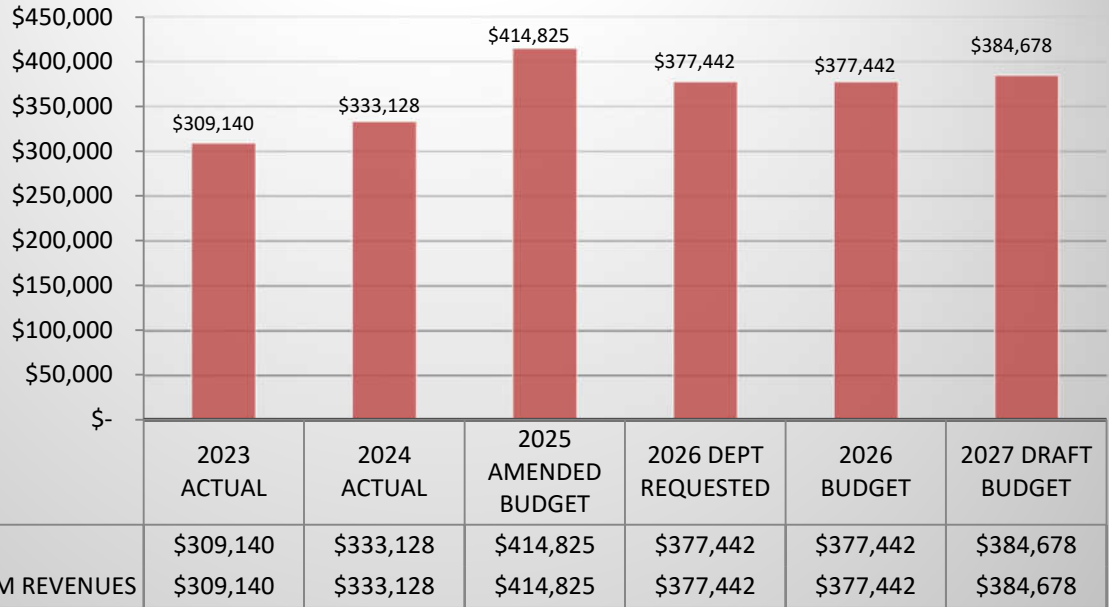
Airport Administration Revenues



	2023 ACTUAL	2024 ACTUAL	2025 AMENDED BUDGET	2026 DEPT REQUESTED	2026 BUDGET	2027 DRAFT BUDGET
OTHER REVENUE	\$125,750	\$122,677	\$143,115	\$130,370	\$130,370	\$130,370
UNKOWN REV	\$-	\$-	\$-	\$12,000	\$12,000	\$12,000
INTEREST & RENTALS	\$159,427	\$168,340	\$149,700	\$158,565	\$158,565	\$158,565
INTERGOVERNMENTAL	\$59,000	\$-	\$-	\$-	\$-	\$-
CHARGES/FEES	\$6,595	\$7,497	\$8,950	\$8,950	\$8,950	\$8,950
TOTAL PROGRAM REVENUES	\$350,772	\$298,514	\$301,765	\$309,885	\$309,885	\$309,885

Airport

Airport Operating Transfer In Revenues



Strategic Outcomes

Indicator	2019 Target	2020 Target	2024 Target	2025 Target
Private business full-time employees based at the airport	42	45	68	78
Private business part-time employees based at the airport	21	21	28	32
Total Dollars Granted from Federal Airport Improvement Program	0	3,190,000	2,600,000	2,200,000
Aircraft Damage Incidents	1	0	0	0

Airport

Other Key Indicators

Indicator	2019 Actual	2020 Actual	2021 Target	2022 Actual	2023 Target	2024 Target
Number of "operations" (aircraft landing or take off)	43965	26405	45,000	30000	35,000	35000
Special Events held at the airport	5	0	3	3	4	3
Overtime expended for Maintenance Ops	6,000	6,000	6,000	8,000	10,000	10,000
Contract Air Traffic Control Costs	75,000	75,000	76,000	35,000	0.00	0.00
General Fund Support Dollars (excluding hangar loan payment and capital outlay)	213,028	295,000	295,000	295,000	295,000	295,000
Fuel flowage in gallons (total JetA and 100LL fuel delivered)	131,965	103,119	140,000	197,000	210,000	200,000
County-owned hangar occupancy rate	100%	100%	100%	100%	100%	100%