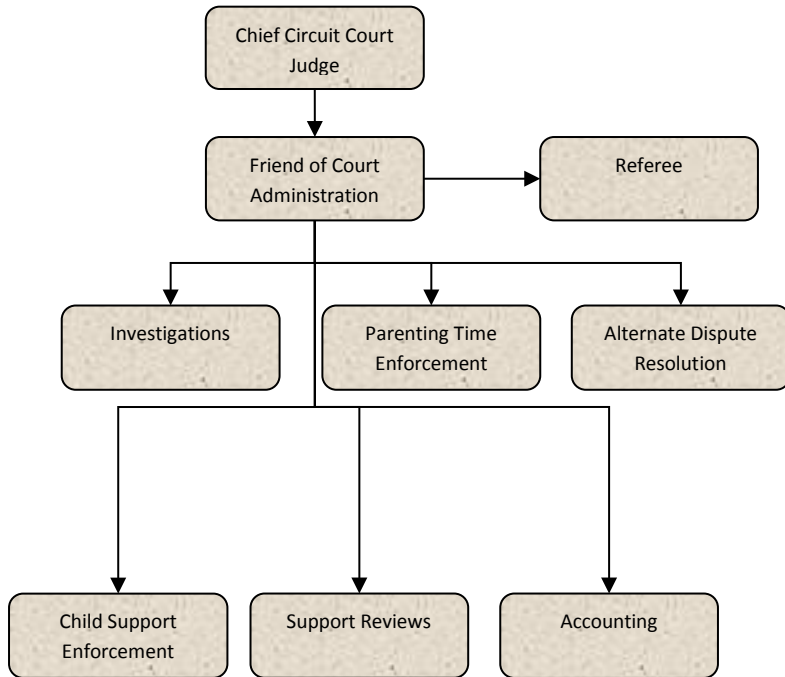




# Friend of the Court

---



## Mission Statement

---

In keeping with the best interest of children, the Jackson County Friend of the Court will provide quality services in a fair and respectful manner.

# Friend of the Court



## Programs

---

Judgment Order Entry Fees

FOC Duties



# Judgement Order Entry Fees

## Activities

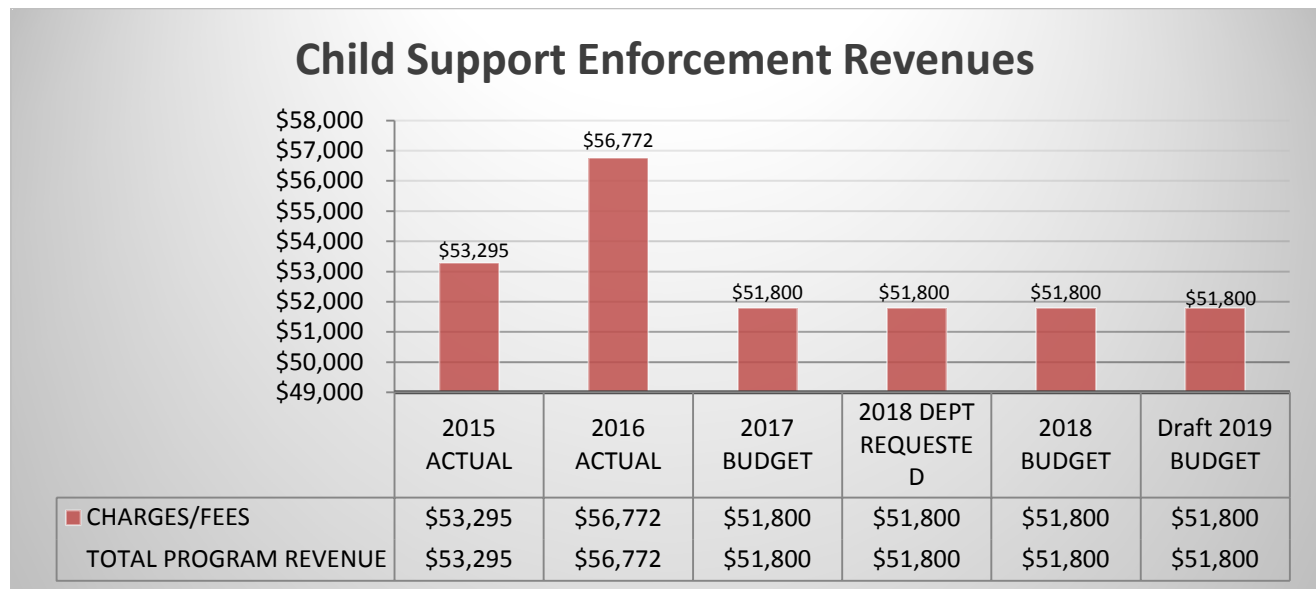
Enforcement of court orders regarding custody, parenting time, and support of minor children. Conducts hearings, investigations, and makes reports and recommendations to the Court on those matters. The FOC offers mediation as an alternative dispute resolution process, for custody and parenting time issues.

## Strategic Plan Impact/Accomplishments

See FOC Duties budget page.

## Budget Adjustments

There are no significant budget adjustments to this program.



# FOC Duties



# Friend of the Court

## Activities

Enforcement of court orders regarding custody, parenting time, and support of minor children. Conducts hearings and investigations, and makes reports and recommendations to the Court on those matters. The FOC offers mediation as an alternative dispute resolution process, for custody and parenting time issues.

## Strategic Plan Impact

### ✓ **Safe Community**

Investigating and making custody, parenting time, and support recommendations helps ensure the proper care and custody of children. Conciliation allows parents to mediate their disputes and to reach their own custody, parenting time, and support agreements, which reduces the likelihood of parental kidnapping, non-payment of support, and parental alienation. Domestic Violence Screening and Safety Planning for families with domestic violence contributes to a safe community by providing safe options for parents at risk or struggling with domestic violence. The FOC has also partnered with Aware Inc. and Safe Havens to provide supervised parenting time and exchanges for families with domestic violence. Reporting suspected abuse and neglect and conducting criminal history checks on FOC employees and vendors contributes to a safe community. Through its participation in the Michigan Prisoner Re-Entry Initiative (MPRI), the FOC reviews parolee support obligations to ensure that support is set at a reasonable amount, and focuses more on job seeking initiatives as opposed to demanding unrealistic payment plans. This reduces parolee anxiety, feelings of hopelessness, and the chance of a parolee returning to a life of crime. The Warrant Unit arrests individuals who have outstanding warrants. Safeguarding confidential FOC files keeps the community safe from improper disclosure of confidential information.

### ✓ **Economic Development**

The duties performed by the Enforcement/Casework, Bench Warrant, and Interstate Units advances economic development. By enforcing and collecting child and spousal support, Jackson's children and families are afforded financial support to help them meet their basic needs. Support is often spent in the community, which ensures continued growth and vibrancy within the local, regional, state, and global marketplace. Additionally, the Friend of the Court is partnering with Michigan Works and Temporary Employment Agencies to connect unemployed or underemployed parents with educational and job opportunities. The FOC has also partnered with MDRC and the Families Forward Demonstration to provide educational and employment assistance to underemployed payers of support. The timely entry and modification of support orders into the Michigan Child Support Enforcement



System by the Accounting Department is critical to the receipting and distribution of support payments. The FOC Support Services Unit, in addition to the Michigan Disbursement Unit, accepts payments locally to ensure that no money is turned away. By reviewing support obligations, the FOC helps ensure that support is set at manageable levels. Customers are more likely to pay their support, if they feel their income has been fairly evaluated. Regular support payments decrease public assistance involvement, which places an unnecessary burden on taxpayers and negatively impacts the economy.

### ✓ **Healthy Community**

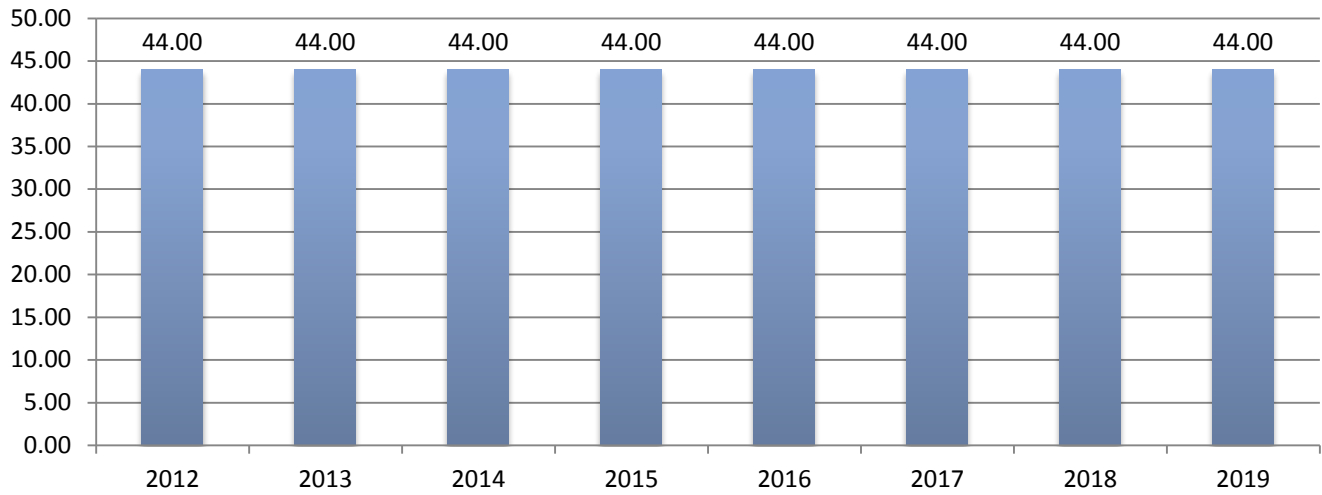
The FOC program has a direct impact on the healthy community strategic priority. By investigating and making recommended orders for custody and parenting time, this contributes to a healthy community by providing appropriate and safe parenting time and custody arrangements. In some cases, supervised parenting time may be appropriate, therapeutic services may be necessary, or non-traditional approaches for parenting may be required. The Conciliation and Investigation Department works with parents to evaluate the best interests of children to create a healthy environment for that child to develop. The Enforcement Unit contributes to a healthy community by enforcing court ordered child support to ensure that the basic needs of children and families are met. In addition, the Enforcement Unit enforces court ordered health insurance provisions and delinquent medical bills, which all directly relate to a healthy community. Reporting suspected child abuse and neglect also contributes to a healthy community by providing intervening services for the children at risk of abuse or neglect.

## **Accomplishments**

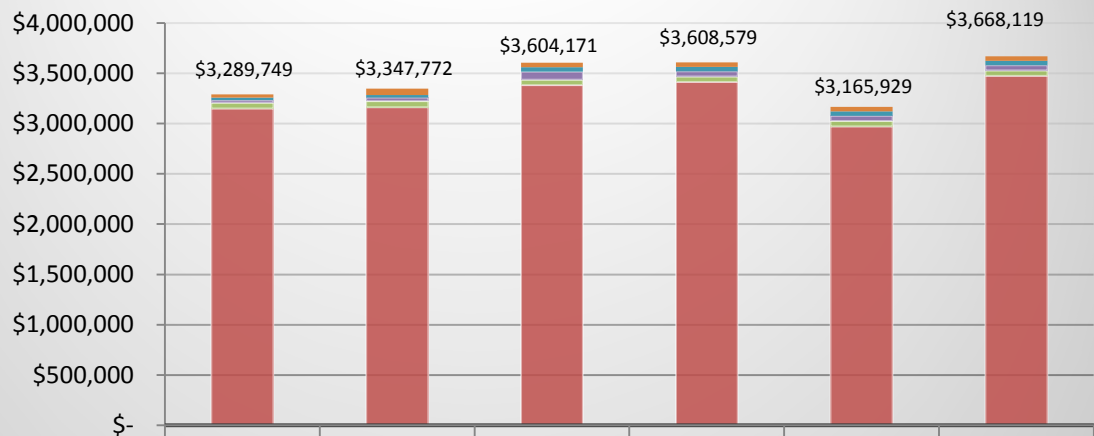
- ✓ Enforcement / Arrears Management: Conducted outreach and promotion of the Arrears Discharge Program resulting in removal of \$2,456,782.43 in state owed debt.
- ✓ Collaboration: Partnered with Aware Inc and Safe Havens to provide supervised parenting time and exchanges.
- ✓ Collaboration: Partnered with MDRC and the Families Forward Demonstration to provide educational and employment services for under or unemployed payers of support.

## **Budget Adjustments**

### Friend of the Court (FOC) FTE History



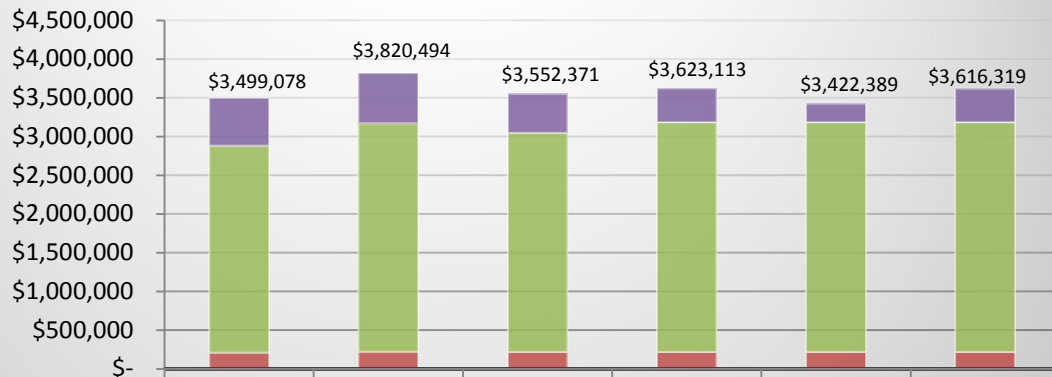
### FOC Duties Expenditures



	2015 ACTUAL	2016 ACTUAL	2017 BUDGET	2018 DEPT REQUESTED	2018 BUDGET	Draft 2019 BUDGET
CAPITAL OUTLAY	\$32,863	\$65,295	\$42,872	\$44,158	\$44,158	\$44,158
OTHER EXPENSES	\$25,348	\$24,517	\$44,600	\$44,600	\$44,600	\$44,600
CONTRACT SERVICES	\$25,220	\$34,824	\$80,898	\$50,891	\$50,891	\$50,891
SUPPLIES & MATERIALS	\$55,593	\$61,887	\$53,900	\$53,900	\$53,900	\$53,900
PERSONNEL SERVICES	\$3,150,725	\$3,161,249	\$3,381,901	\$3,415,030	\$2,972,380	\$3,474,570
<b>TOTAL PROGRAM COSTS</b>	<b>\$3,289,749</b>	<b>\$3,347,772</b>	<b>\$3,604,171</b>	<b>\$3,608,579</b>	<b>\$3,165,929</b>	<b>\$3,668,119</b>



### FOC Duties Revenues



	2015 ACTUAL	2016 ACTUAL	2017 BUDGET	2018 DEPT REQUESTED	2018 BUDGET	Draft 2019 BUDGET
TRANSFERS IN	\$614,626	\$647,294	\$502,582	\$437,898	\$237,174	\$431,104
INTERGOVERNMENTAL	\$2,673,380	\$2,951,484	\$2,830,737	\$2,966,163	\$2,966,163	\$2,966,163
CHARGES/FEES	\$211,072	\$221,716	\$219,052	\$219,052	\$219,052	\$219,052
<b>TOTAL PROGRAM REVENUE</b>	<b>\$3,499,078</b>	<b>\$3,820,494</b>	<b>\$3,552,371</b>	<b>\$3,623,113</b>	<b>\$3,422,389</b>	<b>\$3,616,319</b>

### FOC Operating Transfer Out



	2015 ACTUAL	2016 ACTUAL	2017 BUDGET	2018 DEPT REQUESTED	2018 BUDGET	Draft 2019 BUDGET
CHARGES/FEES	\$-	\$-	\$-	\$-	\$308,260	\$-
<b>TOTAL PROGRAM REVENUE</b>	<b>\$-</b>	<b>\$-</b>	<b>\$-</b>	<b>\$-</b>	<b>\$308,260</b>	<b>\$-</b>

## Friend of the Court

Strategic Outcomes						
Indicator	2014 Actual	2015 Actual	2016 Actual	2017 Target	2018 Target	2019 Target
Percent of incoming telephone calls handled	89	79	80	85	87	87
Percent of cases with medical insurance provided.	64.9	69.69	71.78	72	72	72
Current Support Percentage Collected	65.4	67.32	68.31	71	71	71
Percent of cases receiving arrears collections	60.4	64.61	69.60	70	70	70
Total amount of support collected	\$22,882,402	\$23,010,995	\$22,659,615	\$22,659,615	\$22,659,615	\$22,659,615

Other Key Indicators						
Indicator	2014 Actual	2015 Actual	2016 Actual	2017 Target	2018 Target	2019 Target
Total number of Cases	14,507	14,177	13,857	13,900	13,900	13,900
Telephone calls handled	30,239	26,928	31,464	30,500	30,500	30,500
Conciliations/investigations completed	420	399	427	415	415	415
Support reviews completed	647	677	675	680	680	680
Wednesday show cause hearings held	3101	3080	3453	3500	3500	3500
Full-time employees	43	43	43	43	43	43
Part-time employees	3	3	3	3	3	3
Average wait time per phone call (min)	2.5	2.5	2	2	2	2
Grievances Acknowledged / Total	2 / 11	2 / 22	0 / 10	2 / 10	2 / 10	2 / 10