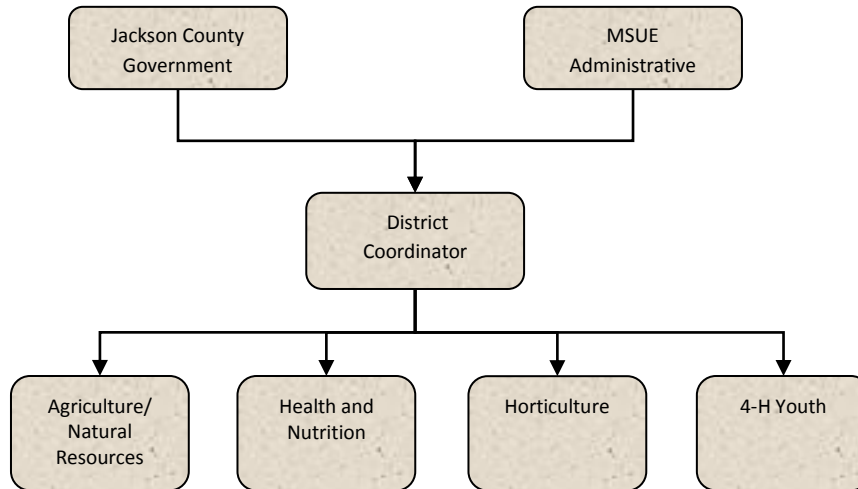




MSU Extension



Mission Statement

Jackson County MSU Extension is an educational leader working with local citizens, government and community organizations, which is based on university research and involves learners in setting goals and applying knowledge for a better life.



Activities

Provide educational programming in agriculture and natural resources, land use, watershed and pesticide management and farm financial stability. Provide educational materials through direct program delivery, distance technology, and the website.

Provide educational programming to pork producers (including principal enterprise and youth) throughout the state in regard to swine production management and nutrition.

Extension 4-H Youth Program - works with youth ages 5-19 and adult volunteers in skill training in character development, leadership, self-esteem and healthy life style choices.

Provide Jackson County residents with educational programs on care and maintenance of their land.

Provide educational programs and information through use of media, one-on-one contact, and educational classroom setting.

Provide educational leadership to create an economical and sociological sustainable agriculture to retain farmers, farmland, open space and the resulting quality of life, rural America work ethic, and a moral sociological influence.

Strategic Plan Impact

✓ **Safe Community**

MSU Extension supports the safe community strategic goal helping to create self-sustaining people. MSU Extension works with county residents to provide needed life skills to have youth involved in productive activities with volunteer mentors.

✓ **Economic Development**

MSUE provides educational programs to increase business skills in development, sustainability and future opportunities to ensure continued growth and vibrancy.

✓ **Healthy Community**

MSUE provides information and technical assistance in how to achieve a healthy lifestyle in the areas of food and nutrition, growth and development and resource management.

✓ **Recreational & Cultural Opportunities**

MSUE provides recreational and cultural activities to the citizens of Jackson County through programs that encourage use of our natural resources, wholesome family activities and opportunities to engage in cultural and educational events.



Accomplishments

- ✓ **Safe Community:** Community service projects are part of nearly every 4-H experience. 4-H is underscoring that aspect of the program through its Revolution of Responsibility campaign. 4-H'ers all over Michigan are identifying needs in their communities, figuring out how to address those needs and stepping up to solve problems, make improvements and create change.
- ✓ **Safe Community:** MSU Extension educators and specialists conducted a Large Animal Care & Handling training for Animal control officers. This training gave officers hands-on experiences for dealing with livestock related incidents in their line of work. In an evaluation of the program 100% indicated that the program was relevant and taught them new knowledge for their job.
- ✓ **Safe Community:** MSU Extension has developed a workshop specially designed for people who work with agricultural producers and farm families who want to know more about managing farm-related stress and learn ways to approach and communicate with those in need. Farmers and farm families are also encouraged to attend. In 2018 there were nine Jackson County Farmers who participated in this program.
- ✓ **Recreational & Cultural Opportunities:** Every spring Jackson County Farm Bureau, with help from the Jackson County Fair, MSU Extension, Jackson County Ag Council, FSA & Soil Conservation, sponsors Rural Education Day at the Jackson County Fair Grounds. Many volunteers and local farmers get together for one day to educate 3rd graders from elementary schools across the county about food and fiber. Our 20th annual Project RED was held in March, and this year Jackson County MSUE staff helped to educate over 1000 students.
- ✓ **Recreational & Cultural Opportunities:** MSU Extension, working collaboratively with Jackson Public Schools' 21st century Grants program, Jackson Area Career Center, Dahlem Environmental Education Center and cooperating teachers in the middle school in the school district facilitated a complete reimagining of the summer school program. Middle school students learned math and science skills while raising chickens, learning outdoor skills and engaging in environmental stewardship. The hands-on nature both drove home critical academic skills, and provided a contextual framework to view how things work.
- ✓ **Economic Development:** The Master Gardener Volunteer program (MGVP) gives interested individuals the chance to participate in a 12-week training experience that provides in-depth education in many aspects of horticulture, including trees and shrubs, flowers, vegetables, fruit, soil, water, pests, indoor gardens, and lawns. The MGVP has been revised to include online modules that will allow participants to take part in classes on a schedule that works best for them.



- ✓ **Economic Development:** The MSU Product Center assists county residents in developing products and businesses in the areas of food, agriculture, natural resources and the bio economy. MSUE has educators with special training as innovation counselors to deliver these services to Jackson County. The partnership between MSUE and the MSU Product Center is providing support for entrepreneurs, which supports economic development across the state. Twenty business counseling sessions took place to assist seven clients. These clients included, farms, valued- added agriculture operations and food processors. One food processor received assistance in securing Global Food Safety Initiative (GFSI) certification that has allowed them to sell into larger markets. There was one new venture launched in Jackson County. One million dollars in new sales was reported along with \$75,000 of new investment.
- ✓ **Healthy Community:** MSU teaches the ServSafe® program to improve food safety procedures at food establishments by training managers and employees. The learning of those who attend ServSafe® training is evaluated by whether they are able to pass the state mandated written test at the conclusion of the class. As of April 1, 2010, Michigan food service establishments are required to employ a minimum of one certified manager. Across Michigan there is a need for educational programming to assist with training food service managers and past attendees are required to renew their certification every 5 years.
- ✓ **Healthy Community:** The Supplemental Nutrition Assistance Program—Education (SNAP-Education) provides nutrition education to Bridge care eligible adults and children. This program focuses on improving dietary quality, and on increasing physical activity, while stretching food dollars. The ultimate goal of SNAP-Education programs is to promote healthy weight maintenance and to prevent obesity. The Jackson Nutrition and Physical Activity staff have taught nutrition education to 850 youth and 128 adults in Jackson County from October 2017 to September 2018. Nutrition education programs offered in Jackson County include Cooking Matters for Adults, Eat Healthy Be Active, WIC Project Fresh, and Show Me Nutrition. Impacts included:
 - 81% of youth participants improved their abilities or gained knowledge about how to choose foods according to Federal Dietary Guidelines.
 - 79% of adult participants made a positive change in at least one nutrition practice, such as preparing foods without adding salt, or using the Nutrition Facts labels to make food choices.
 - 76% of adult participants made a positive change in at least one food resource management practice, such as planning meals in advance or comparing prices when shopping.

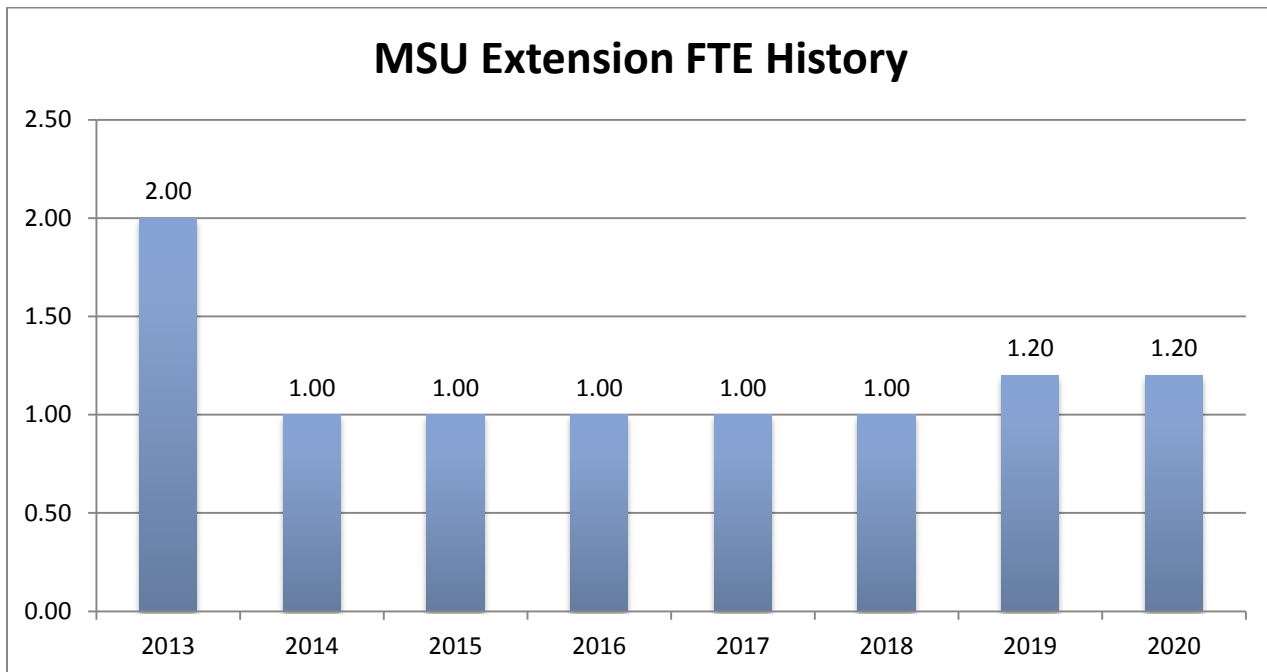
Youth participating in SNAP-Education classes were more likely to:

- Choose healthy snacks.
- Consume more fruits and vegetables.



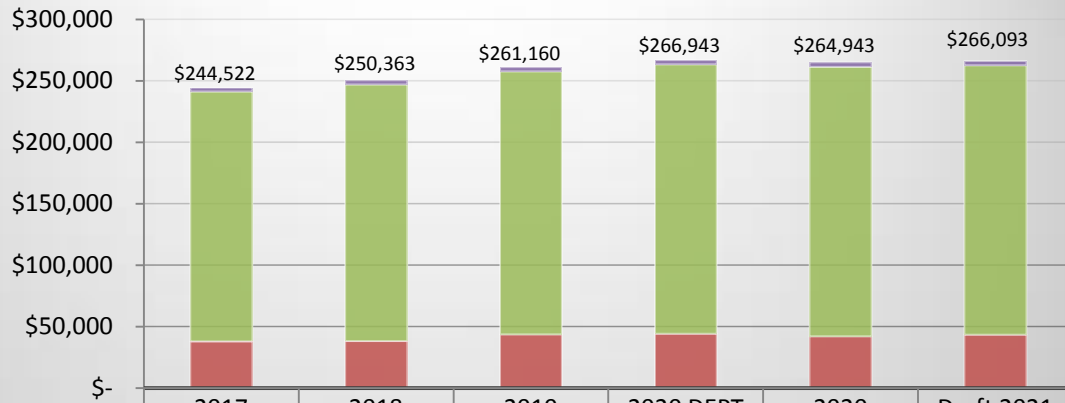
- ✓ **Healthy Community:** Good Agricultural Practices— Classes and presentations on Good Agricultural Practices prepare farmers to sell their produce in retail markets and ensure the safety of their produce for sale. In these programs, participants learn about topics in produce safety, responsibility in food safety, good agricultural practices and how to implement changes in their operation that can further enhance quality and safety of their food. For more information visit the Good Agricultural Practices website.

Budget Adjustments There are no significant changes to the county contribution to MSU Extension. MSU Extension has reformed their organizational structure at the state level, which changes the approach to county funding. In 2012 Jackson County entered into a memorandum of agreement with MSU Extension. A base funding has been established for Jackson County based on county population. Additional educational staff is funded 80% by the county and 20% by MSU Extension for one position and 40% by the county and 60% by MSU Extension for the other position. The 2014 recommended budget kept the current Jackson MSU Extension staff intact, which included the base funding and a 0.8 FTE reduction in county clerical staff.





MSU Extension Expenditures



	2017 ACTUAL	2018 ACTUAL	2019 BUDGET	2020 DEPT REQUESTED	2020 BUDGET	Draft 2021 BUDGET
OTHER EXPENSES	\$3,078	\$3,256	\$3,500	\$3,500	\$3,500	\$3,500
CONTRACT SERVICES	\$203,421	\$208,662	\$213,715	\$219,063	\$219,063	\$219,063
PERSONNEL SERVICES	\$38,023	\$38,445	\$43,945	\$44,380	\$42,380	\$43,530
TOTAL PROGRAM COSTS	\$244,522	\$250,363	\$261,160	\$266,943	\$264,943	\$266,093



Strategic Outcomes

<u>Indicator</u>	<u>2015 Actual</u>	<u>2016 Actual</u>	<u>2017 Actual</u>	<u>2018 Actual</u>	<u>2019 Target</u>	<u>2020 Target</u>
Number of individuals using soil tests to guide fertilizer applications	182	161	192	142	175	185
Money saved from volunteering	\$68,833	\$75,833	\$79,135	\$82,245	\$87,500	\$90,000

Other Key Indicators

<u>Indicator</u>	<u>2015 Actual</u>	<u>2016 Actual</u>	<u>2017 Actual</u>	<u>2018 Actual</u>	<u>2019 Target</u>	<u>2020 Target</u>
Youth 5-19 year olds involved in programming	2,256	3,253	3,367	2,850	3,500	3,600
Educators	5	5	5	5	5	5
Secretaries	1.2	1.2	1.2	1.2	1.2	1.2
Program Coordinators/Instructors	2	4	4	4	5	5
4-H volunteers	118	130	133	133	150	160
Number of youth reached per volunteer	19	25	25	22	25	25
ServSafe pass rates	89%	92%	90%	91%	90%	90%



This page intentionally left blank.