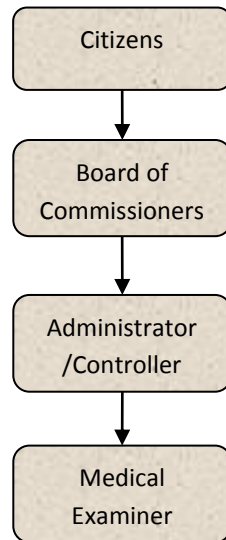




Medical Examiner



Mission Statement

It is the mission of this office to complete an efficient, professional and dignified investigation of any death reported to this office which falls under the guidelines set forth by the State of Michigan and having occurred within the County of Jackson in order to determine cause and manner of death.



Programs

It is the duty of this office to investigate in certain instances the cause and manner of death within this county due to acts of violence, negligence or omission of a criminal nature and/or threats to protect public health.

Activities

It is the duty of this office to investigate in certain instances the cause and manner of death within the county due to acts of violence, negligence or omission of a criminal nature and/or threats to protect public health.

The office consists of two employees: the Medical Examiner and an Assistant.

The services of pathology assistants, forensic pathologists, forensic dentists, body removal services, field investigators, morgue facilities, etc., are either contracted or are on a fee for service basis.

All service providers work on an on-call basis and respond when needed, coordinating their efforts to be most effective.

Strategic Plan Impact

✓ **Safe Community**

This is a State mandated office which has a direct impact on the safety of the community as we are responsible for investigating sudden & unexpected deaths. For example, the information gathered provides direct support for prosecution in criminal matters, or can be provided to families when the potential for a genetic problem is identified, therefore possibly saving lives in the future. Our office by and through our investigations prevents repeat injuries and works to identify any potential threat to the public health.

✓ **Healthy Community**

We help to provide critical and time sensitive information regarding the deaths in the community to protect the health and welfare of our citizens as well as establishing trends to be addressed to promote a healthier community.

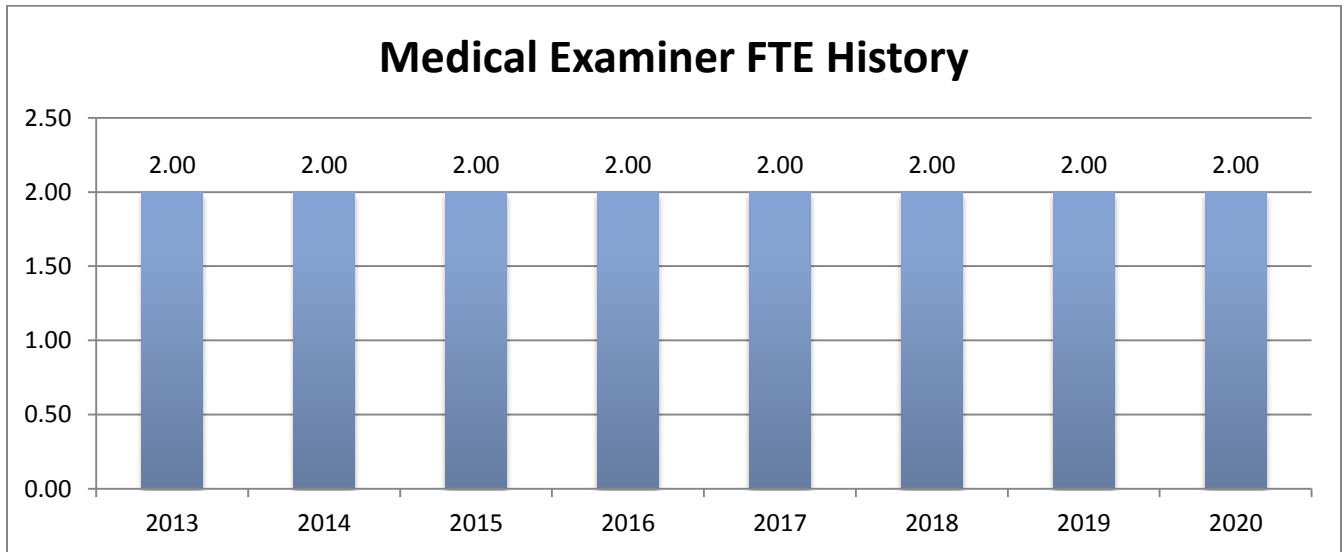
Accomplishments

- ✓ Implemented procedural changes in the office to more effectively /efficiently respond to consumer requests resulting in a more rapid response.



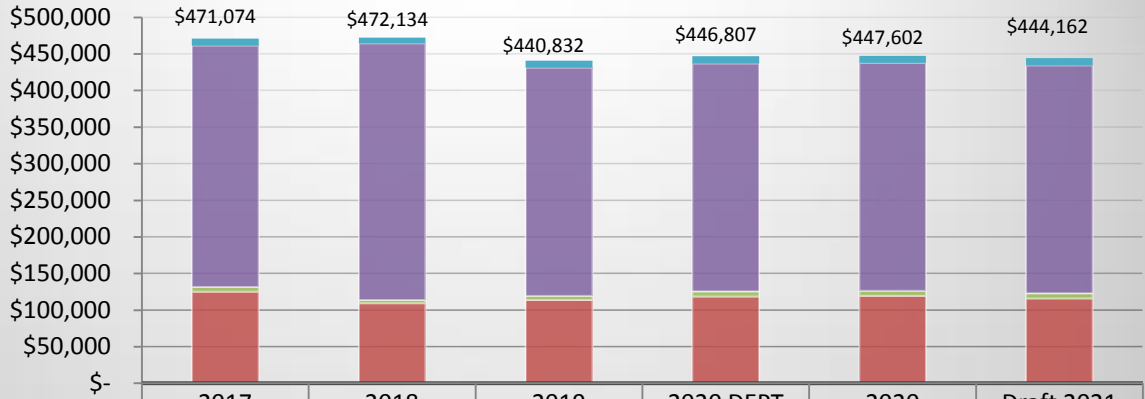
Budget Adjustments

There are no significant budget adjustments to this program.



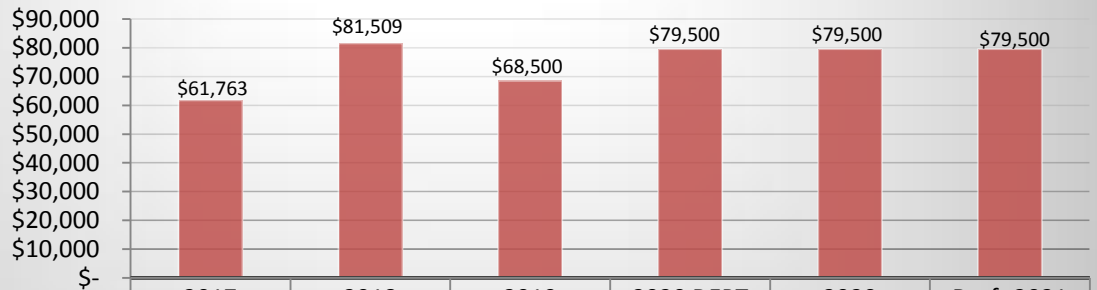


Medical Examiner Expenditures



	2017 ACTUAL	2018 ACTUAL	2019 BUDGET	2020 DEPT REQUESTED	2020 BUDGET	Draft 2021 BUDGET
OTHER	\$9,675	\$7,673	\$9,777	\$9,777	\$9,777	\$9,777
CONTRACT SERVICES	\$329,517	\$350,662	\$311,500	\$311,500	\$311,500	\$311,500
SUPPLIES & MATERIALS	\$6,664	\$4,473	\$5,700	\$6,700	\$6,700	\$6,700
PERSONNEL SERVICES	\$125,218	\$109,326	\$113,855	\$118,830	\$119,625	\$116,185
TOTAL PROGRAM COSTS	\$471,074	\$472,134	\$440,832	\$446,807	\$447,602	\$444,162

Medical Examiner Revenues



	2017 ACTUAL	2018 ACTUAL	2019 BUDGET	2020 DEPT REQUESTED	2020 BUDGET	Draft 2021 BUDGET
CHARGES/FEES	\$61,763	\$81,509	\$68,500	\$79,500	\$79,500	\$79,500
OTHER REVENUE						
TOTAL PROGRAM REVENUE	\$61,763	\$81,509	\$68,500	\$79,500	\$79,500	\$79,500



Strategic Outcomes						
Indicator	2012 Actual	2013 Actual	2014 Actual	2015 Target	2016 Target	2017 Target
Percent of respondents who say they feel very or somewhat safe from violent crime	*	49%				

Other Key Indicators						
Indicator	2012 Actual	2013 Actual	2014 Actual	2015 Target	2016 Target	2017 Target
Cases Reviewed	329	330	N/A	N/A	N/A	N/A
Autopsies Performed	140	136	N/A	N/A	N/A	N/A
Cremation Fees Collected	\$43,350	\$43,350	\$37,000	\$42,000	\$37,000	\$42,000
Prison Reimbursement Dollars	\$15,893	\$19,100	\$17,000	\$17,000	\$17,000	\$17,000
Report Fees / SUID Reimbursement Dollars	\$3,095	\$ 2,520	\$3,500	\$3,500	\$3,500	\$3,500
ME	1	1	1	1	1	1
Forensic Pathologists	3	3	3	3	3	3
Diener (pathology assistants)	3	3	3	3	3	3
Field Investigators	8	8	9	9	9	9
Administrative Assistant	1	1	1	1	1	1
Average Cost Per Case for Forensic Pathologist	\$800	\$800	\$800	\$800	\$800	\$800
Average Cost Per Case for Diener	\$95	\$95	\$95	\$95	\$95	\$95
Average Cost Per Toxicology	\$180	\$180	\$180	TBD	\$180	TBD
Average Morgue Cost Per Autopsy	\$50	\$50	\$50	\$50	\$50	\$50
Average Cost For Field Investigator Per Day	\$100	\$100	\$100	\$100	\$100	\$100
Average Time Autopsy Completed After Body Delivery to Morgue	24 Hours	24 Hours	24 Hours	24 Hours	24 Hours	24 Hours
Average Time Until Completion of Final Autopsy Report	1-2 Months	1-2 Months	1-2 Months	1-2 Months	1-2 Months	1-2 Months



Medical Examiner



This page intentionally left blank.